

Special Education Funding in California

Most special education funding is distributed through Special Education Local Planning Areas (SELPA). SELPAs are regional offices that cover school districts within a specific geographical area.

Districts and county offices in each SELPA work together to determine how special education funding is allocated.

Federal Funding: Individuals with Disabilities Education Act (IDEA), Part B: Special Education

Federal funding is given to state based on:

Number of special education students in the state in 1999 (when base grants were calculated), number of low-income students in the state, and total number of students in the state

California



+

State Funding: AB 602 Base Funding for Special Education

State Funding: AB 602 Supplemental Funding for Special Education

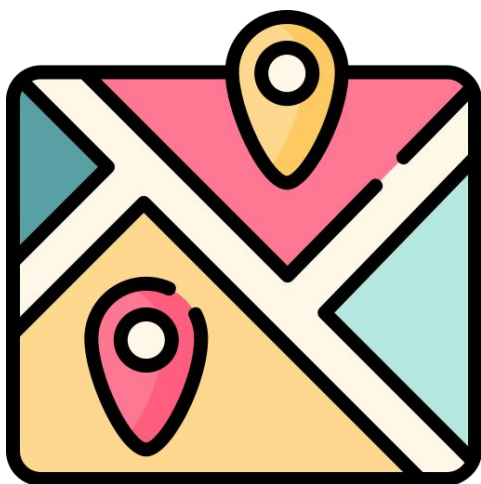
State Funding: Non-AB 602 Special Education Funding

State gives IDEA federal funding to SELPAs based on:
Total number of students in the SELPA's member districts

Funding is based on:
Total number of students in the SELPA's member districts

Funding is based on:
Number of special education students in the SELPA's member districts and cost of programs (e.g. for residential placements, orthopedic disabilities, etc.)

Additional funding allocated to special education for one-time or ongoing programs and services; allocation and acceptable uses vary



Special Education Local Planning Areas (SELPA)

SELPA Shared Costs

SELPA Administrative Costs



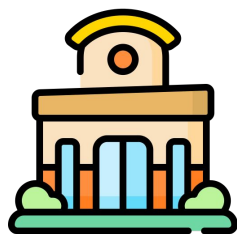
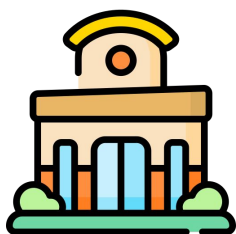
Regional Programs and Services



Reserves for Extraordinary Costs



School Districts



Learn More

[How is Special Education Organized?](#) - California Legislative Analyst's Office

[How is Special Education Funded?](#) - California Legislative Analyst's Office

[Special Needs: Why Not Teach All Kids Alike?](#) - Ed 100

[California Special Education Local Plan Areas - Administration](#) - California Department of Education

[California Special Education Funding System Study](#) - WestEd

