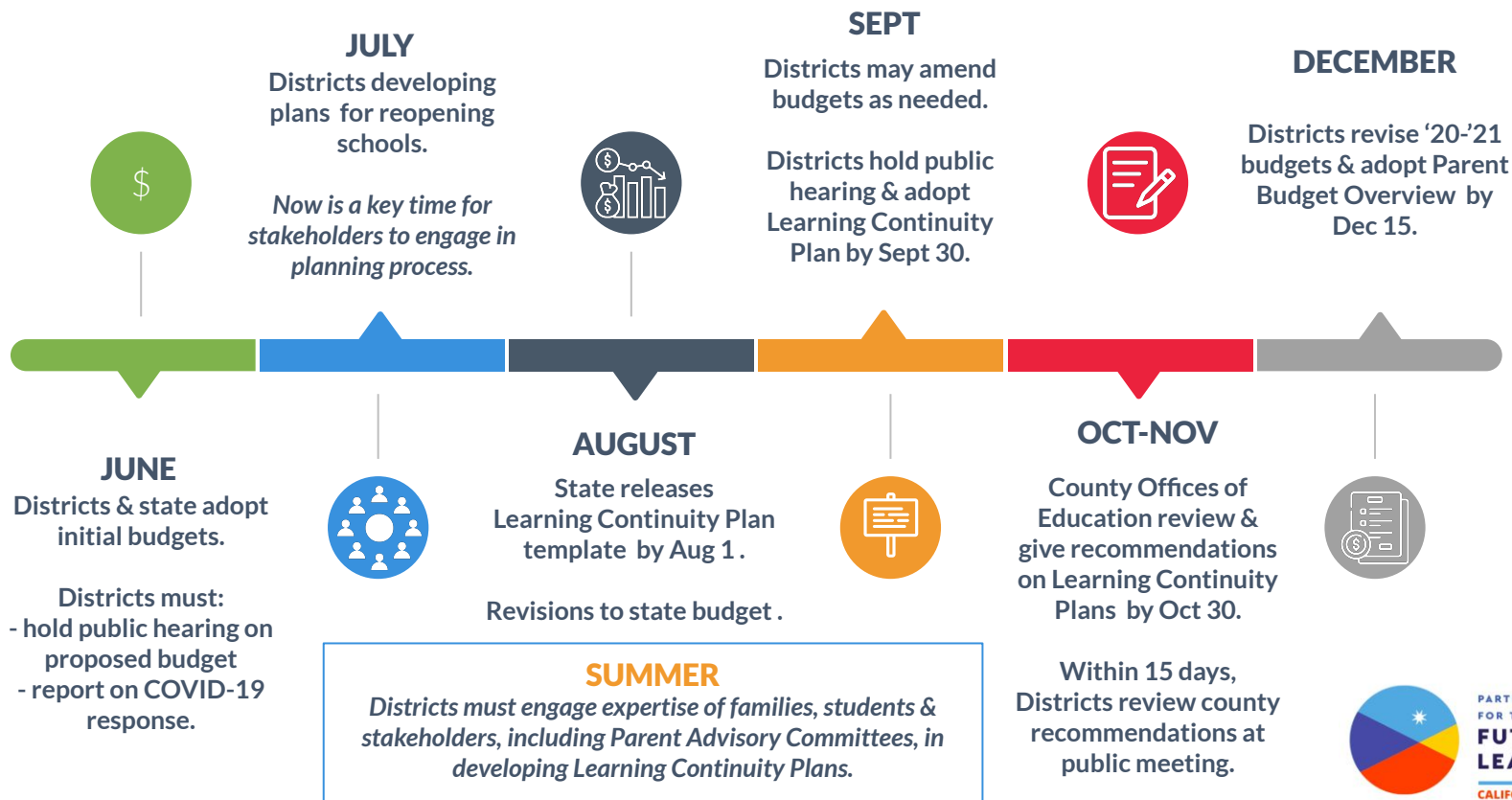



UPDATED 2020 BUDGET & PLANNING TIMELINE



What Must the Learning Continuity Plan Include?

1. What the district is going to do to make sure kids keep learning and how it will address the impact of COVID-19 on students, staff and community, including how much it will spend on each action. 
2. How it will spend federal and state funding, including Learning Loss funds (one-time \$\$ from feds for COVID relief to be spent by 12/30)
3. How the district is using \$\$ earmarked for high-need students to close opportunity gaps

The plan must cover:

- in-person instruction
- distance learning,
- addressing learning loss,
- supporting mental and social-emotional health of students and staff,
- resources for staff and students to address trauma and other pandemic impacts,
- strategies to engage students absent from distance learning, including in-language outreach to families, and
- school nutrition.

What Must the Learning Continuity Plan Include?

01

In-person Instruction

What will you do to provide classroom instruction as much as possible, especially for students who have experienced and are most at risk of learning loss?

02

Distance learning

- Access to devices and internet connection
- Tracking student participation and progress
- Engagement/outreach for absent students
- Additional supports for students with special needs
- Professional development/ resources for staff
- Roles/ responsibilities of staff in response to COVID

03

Learning loss

- Assessment of learning status in ELA, ELD, math
- Actions to address learning loss for all students + specific actions for ELs, low-income, FY, SWD, homeless
- How the effectiveness of actions will be measured

04

Mental health/ SEL

- How the district will monitor and support the mental health/ social-emotional well-being of students/staff
- Professional development/ resources to address trauma and other impacts of COVID on school community

05

Nutrition

How will meals be provided to students eligible for free/ reduced meals, during in-person and distance learning?

Parent/Student Engagement in Learning Continuity Plan



Source:
Ed Code 43509

- ❑ The school district **must consult with parents and students** in developing the Learning Continuity Plan.
- ❑ District **must notify the public** of opportunity to provide written comments. Notification should be in languages other than English.
- ❑ District must provide **PAC and ELPAC an opportunity to separately review and comment** on the Learning Continuity Plan and must respond in writing to PAC and ELPAC comments.
 - PAC - Parent Advisory Committee (*majority parents & includes parents of high-need students*)
 - ELPAC - English Learner Parent Advisory Committee (*majority EL parents*)

Parent/Student Engagement in Learning Continuity Plan

- ❑ The Learning Continuity Plan **must be presented at a public hearing**. Hearing agenda must be posted at least 72 hours in advance and explain how to locate the plan.
- ❑ Board must **adopt the Learning Continuity Plan at a separate public meeting** held after the the Learning Continuity Plan is presented.
- ❑ Hearings must include **remote participation options** and district must make efforts to **solicit feedback from families without internet and/or who do not speak English**.
- ❑ Learning Continuity Plan must describe **impact of stakeholder engagement**.

